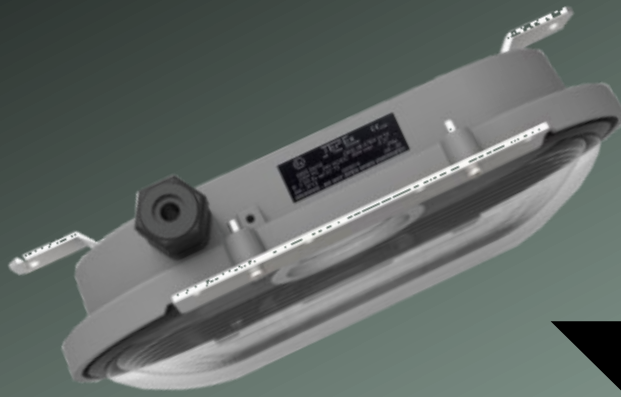




BULKHEAD



5 year warranty

0403.24 LED  
(BH20-Ex-LED)

IP 66



**Application:** locations requiring lighting in confined or restricted spaces in potentially explosive atmospheres.

**Body:** Aluminium alloy with powder paint finish

**Diffuser:** Borosilicate glass, silicone gasket (Guard optional)

**Mounting:** Ceiling/Wall mounting bracket included

**ATEX certified:** Zone 1/21

Ex II 2G Ex eb mb IIC T6 Gb  
Ex II 2D Ex tb IIIC T80°C Db IP66 IK08

**AmbT:** -30°C to +55°C

**Voltage:** 220-240V AC, 20W

**Light output:** 2000lm

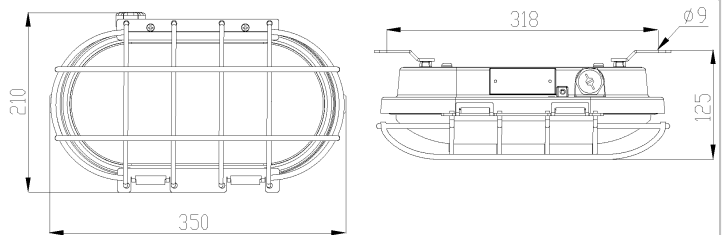
**Termination:** L1, N: max. 2x4mm<sup>2</sup>  
PE terminal: max. 2x4mm<sup>2</sup>

**Entries:** 2 x M25 (glands not included)

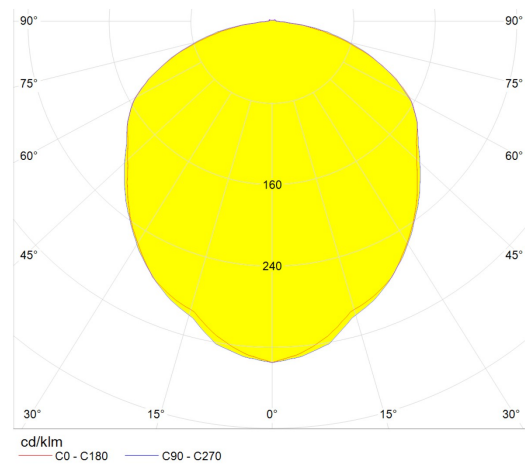
**Weight:** 4kg

**Optional:** Guard - 316SS

Code	Voltage	Luminous Flux
0403.24 LED (BH20-Ex-LED)	220-240Vac	2000lm



**Polar Curve:**



**Guard (Optional):**



**STL International Ltd**

Hill Farm, Linton Hill, Maidstone, Kent, ME17 4AL, United Kingdom

t. +44(0)1622 749633, f. +44(0)1622 746800, e. solutions@stl-int.co.uk, www.stl-int.co.uk