



5 year warranty

NORD-N-LED

IP 66



Application: premises with danger of explosion. They can be used in paintboxes and paint shops. Light fixture is certified by FTZU Ostrava-Radvanice (certificate FTZU 05 ATEX 0026X).

Ballast: EP – electronic ballast 220-240V/50-60Hz AC, 220-240V DC

Body: White painted metal sheet RAL9003

Cover: OP- opalic tempered safety glass

Reflector: White painted metal sheet RAL9003

Fastening: Fastening to the false ceiling on the wall (care must be taken on asufficiently rigid carrier substrate)

Connection: Screwless five-pole terminal block, max. diameter of wires 2,5 mm²

Standard equipment: 1 pc sealing cable gland, 1 pc sealing plug **Calculated**

lifetime – LED modules: L80B10 ta40 – 70 000h

L70B10 ta40 – 100 000h **On request:**

DIM - dimmable electronic ballast (DALI)

Em – non-maintained emergency lighting (1 h, 3 h) **MULTI** – maintained emergency lighting (1 h, 3 h)

1F/3F – one or three phase through-wiring connection

NANO – light fixture protected by special nanolayer

(hydrophobic, oleophobic or antibacterial protection)

NEREZ – body from stainless steel sheet **RAL** – another colour

finishing

2.7K-6.5K – colour temperatur

		T ₀ A	(lm)*	(W)**	BodyC (mm)
- t_a -20°C ≤ ta ≤ +55°C					
055880	NORD-N-LED-5000-218-4K	4000	4330	43	767 x 386 x 92
- ta -20°C ≤ ta ≤ +50°C					
055881	NORD-N-LED-10000-236-4K	4000	8750	77	1367 x 386 x 92
- t_a -20°C ≤ ta ≤ +45°C					
055883	NORD-N-LED-10000-418-4K	4000	8670	77	767 x 536 x 92
- t_a -20°C ≤ ta ≤ +40°C					
055882	NORD-N-LED-15000-258-4K	4000	13180	107	1667 x 386 x 92
055884	NORD-N-LED-18300-436-4K	4000	15720	125	1367 x 536 x 92
- t_a -20°C ≤ ta ≤ +30°C					
055885	NORD-N-LED-29000-458-4K	4000	24910	194	1667 x 536 x 92
- maintained emergency mode 1,5h; 3h, t_a 0°C ≤ ta ≤ +35°C					
055886	MULTINORD-N-LED-5000-218-4K, 1h	4000	4330/9%	43	767 x 386 x 92
055887	MULTINORD-N-LED-10000-236-4K, 1h	4000	8750/6%	77	1367 x 386 x 92
055888	MULTINORD-N-LED-15000-258-4K, 1h	4000	13180/4%	107	1667 x 386 x 92
055889	MULTINORD-N-LED-10000-418-4K, 1h	4000	8670/5%	77	767 x 536 x 92
055890	MULTINORD-N-LED-18300-436-4K, 1h	4000	15720/3%	125	1367 x 536 x 92
055892	MULTINORD-N-LED-5000-218-4K, 3h	4000	4330/9%	43	767 x 386 x 92
055893	MULTINORD-N-LED-10000-236-4K, 3h	4000	8750/6%	77	1367 x 386 x 92
055894	MULTINORD-N-LED-15000-258-4K, 3h	4000	13180/4%	107	1667 x 386 x 92
055895	MULTINORD-N-LED-10000-418-4K, 3h	4000	8670/5%	77	767 x 536 x 92
055896	MULTINORD-N-LED-18300-436-4K, 3h	4000	15720/3%	125	1367 x 536 x 92
- maintained emergency mode 1,5h; 3h, t_a 0°C ≤ ta ≤ +30°C					
055891	MULTINORD-N-LED-29000-458-4K, 1h	4000	24910/2%	194	1667 x 536 x 92
055897	MULTINORD-N-LED-29000-458-4K, 3h	4000	24910/2%	194	1667 x 536 x 92
- special equipment					
008060	Cable gland Ex M20x1,5				
007047N	Flat sealing ring EPDM 27x18,5x1,5 mm				
008097	Plastic nut WISKA EMUG 20 M20x1,5				
008090	Sealing plug Ex M20x1,5				

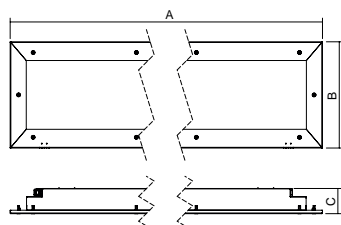
(lm)* - luminous flux, (W)** - input power

Application of light fixtures in areas with danger of explosion

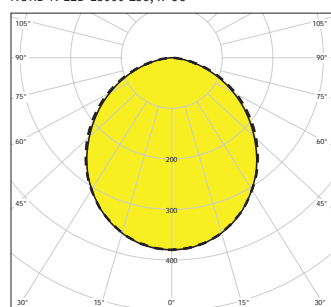
	Marking of external influences	Classification areas	
		Marking	Formation prescription
Danger of explosion of flammable dust	BE3N1	ZONA 22	ČSN EN 60079-14
			ČSN EN 60079-10-2
Danger of explosion of flammable gases and vapors	BE3N2	ZONA 2	ČSN EN 60079-14
			ČSN EN 60079-10-1

NORD-N-LED, NORD-N-Em-LED, MULTINORD-N-LED

- ⊕ II 3G Ex nR IIC T6 Gc
- ⊕ II 3D Ex tc IIIC T63°C Dc



NORD-N-LED-15000-258, IP66



— CO-C180 - - - - C90-C270

FTZÚ 17 ATEX 0026X

STL International Ltd

Hill Farm, Linton Hill, Maidstone, Kent, ME17 4AL, UK T. +44 (0)1622 749633 eMail. solutions@stl-int.co.uk Web. www.stl-int.co.uk