



UPS

UPS-IOM-iss1

General

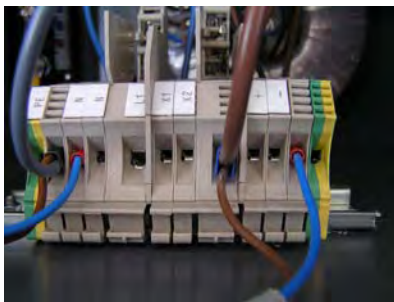
The UPS is for use in a lifeboat, zone 2 explosive atmosphere. It combines in a single unit, a 40Ah battery and its controls to supply 12Vdc to three 11W compact fluorescent light fittings for at least 12 hours.

Installation

The UPS must be installed by a competent person.

Assembly

1. Secure the UPS to the floor of the lifeboat and remove the lid. **WARNING** – the battery is charged.
2. Install the 'Load switch' and connect to the UPS through an M20 cable gland suitable for the environment. Subsequently, wire the switch to X1 and X2 on the terminal strip (volt-free contact).
3. Install the lights and connect to the UPS. Wire the lights to + and – on the terminal strip. Please observe the polarity.
4. Connect the supply cable from the self-ejecting plug&socket to L1/N/E on the terminal strip.



Specification

Certification label:

	STL International Ltd Hill Farm, Linton Hill Maidstone, Kent, ME17 4AL		
		PHX 08 ATEX 1204	
Type: UPS	254Vac/12Vdc, 12A, 40Ah	EEx nA II T5	IP55
Serial No.: 11/03004	Year of construction: 2011	Tamb. -20°C/+40°C	Cell Type: LiFePO ₄ No of cells: 1
DO NOT OPEN WHEN EXPLOSIVE ATMOSPHERE IS PRESENT			

Area classification: Zone 2
 Ingress protection: IP55
 Supply voltage: 254V, ±6%, 50/60Hz

Battery:
 Type: LiFePO₄
 (Lithium Iron Phosphate)
 Voltage: 12.8V
 Rated capacity: 40Ah
 Cycle life: 1500
 Operating temp: -20°C to +60°C

Charger:
 Charge voltage: 14.7V
 Float voltage: 13.6V
 Charge current: 12A
 Charging LED status indicators:
 Blue AC power online
 Red High charge cycle
 Green Float
 Amber Battery type



Fuses:
 Incoming supply: 5A, 6.3x25mm Quick acting HBC
 Load: 3A, 6.3x25mm Quick acting HBC

Operation

The UPS will be energised when the self-ejecting plug and socket is connected and is indicated with a green lamp. The supply to the plug and socket is via the safety relay which is in turn controlled by the auxiliary pins of the plug and socket.

The battery will be fully charged after 8 hours.

The lights will go ON when the switch is opened ('I' position) and go OFF when the switch is closed ('0' position). Please note that when applying power to the UPS and the switch is closed, the lights will come ON for a few seconds until the test phase is finished and the electronics recognises the OFF position.

When mains power is lost, either from the installation or the plug&socket has been disconnected, the green lamp module will go out. The battery will supply the 3 lights with 12Vdc power for at least 12 hours when fully charged.

The red lamp is an error indicator which will illuminate for 90 seconds when battery voltage is too low (<10.5V) or too high (>16V).

The UPS should not be opened in an explosive atmosphere as the battery connections are live.

Maintenance

- Screws and glands should be checked from time to time for tightness.
- Check if the lamps are operational when switching the load switch ON and OFF.
- Check battery operation regularly.

In the event of serious damage, please call your supplier for replacement parts.

