

Industrial lighting fixtures – insulation class I Промышленные светильники класс изоляции I



Application: indoor and outdoor areas with demanding resistance to dust penetration and water jets.

Body: white painted metal sheet or stainless steel.

Cover: hardened safety glass 5mm thick or PC fastened on the body by means of metal clips

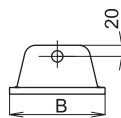
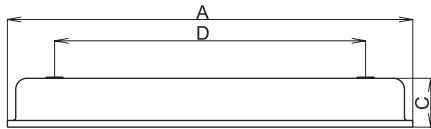
Reflector: white painted metal sheet 0.6 mm thick.

Fastening system: suspension by means of steel brackets with steel cable or chain

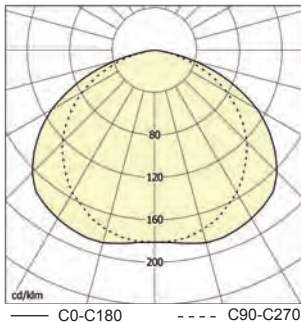
Technical parameters of the fixtures are referred in table on page 142.



STL International Ltd
Hill Farm, Linton Hill
Linton, Maidstone
Kent. ME17 4AL
United Kingdom
tel. +44 (0)1622 749633
fax. +44 (0)1622 746800
email. solutions@stl-int.co.uk
web. www.stl-int.co.uk

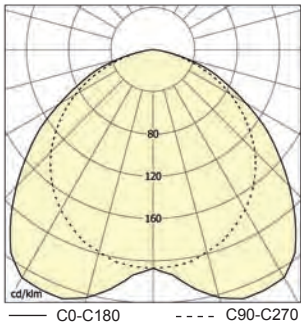


SALUKA, 2x36W, IP66



— C0-C180 - - - - C90-C270

SALUKA-AR, 2x36W, IP66



— C0-C180 - - - - C90-C270

Order no	Model	Lamp/ socket	Dimensions [mm]		Weight [kg]	
			A x B x C x D			
- el.ballast/ эл.дроссель						
54306	SALUKA-118-EP, 1x18W	T26/G13	705 x 192 x 90 x 560		-	
54307	SALUKA-218-EP, 2x18W				-	
54308	SALUKA-136-EP, 1x36W				-	
54309	SALUKA-236-EP, 2x36W				1305 x 192 x 90 x 1160	7,9
54298	SALUKA-336-EP, 3x36W				-	-
54310	SALUKA-158-EP, 1x58W				-	-
54311	SALUKA-258-EP, 2x58W	T16/G5	1605 x 192 x 90 x 1400		9,5	
54299	SALUKA-358-EP, 3x58W				-	-
56170	SALUKA-228-EP, 2x28W				-	-
56171	SALUKA-254-EP, 2x54W	T16/G5	1305 x 192 x 90 x 1160		-	
56172	SALUKA-235-EP, 2x35W				-	-
56173	SALUKA-249-EP, 2x49W				-	-
56174	SALUKA-280-EP, 2x80W				1605 x 192 x 90 x 1400	-
56174	SALUKA-280-EP, 2x80W				-	-
- for maintained emergency lighting, el.ballast, 1h						
54345	MULTISALUKA-218-EP, 2x18W, 1h	T26/G13	705 x 192 x 90 x 560		3,6	
54349	MULTISALUKA-136-EP, 1x36W, 1h				1305 x 192 x 90 x 1160	4,9
54343	MULTISALUKA-236-EP, 2x36W, 1h				-	5,2
54347	MULTISALUKA-158-EP, 1x58W, 1h				-	6,4
54341	MULTISALUKA-258-EP, 2x58W, 1h				1605 x 192 x 90 x 1400	6,7
54341	MULTISALUKA-258-EP, 2x58W, 1h				-	-
- special accessories/ спец.оснащение						
8001	M20 cable gland, grey, seal incl./ Заглушка M20 серая включая уплотнения					
8501	M20 sealing plug, grey, seal incl. + nut/ Пробка M20 серая, включая уплотнения и гайки					
1540	Steel suspension chain -polished (1 rack=5kg)/ Стальная завесная цепочка - полир. (1шт.=5кг)					
1995	Reflector AR – 2x36W deep radiant/ Отражатель AR – 2x36W глубокоизлучатель					
1996	Reflector AR – 2x58W deep radiant/ Отражатель AR – 2x58W глубокоизлучатель					
51139	Ceiling stainless steel bracket SALUKA/ Потолочный фиксатор из нержавеющей SALUKA					

