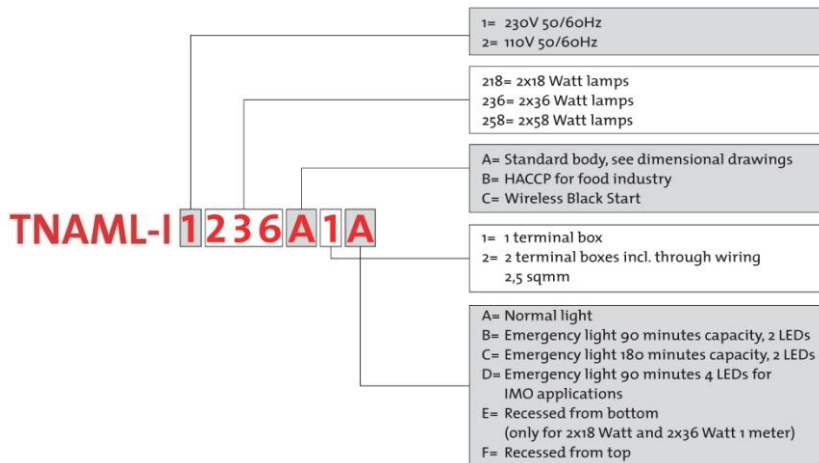
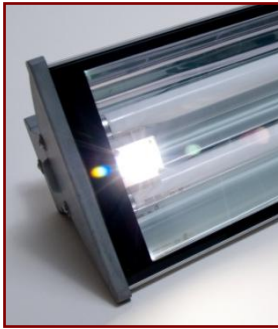


Fluorescent Luminaire Industrial

COMPLIANT WITH **HACCP** GUIDELINES
 MAINTENANCE FREE – SEALED FOR LIFE
 10 year warranty *



Features:

- ✚ Sealed for life construction – maintenance free design
- ✚ HACCP compliant (report DEKRA 06540)
- ✚ Fully Recyclable
- ✚ Seawater resistant anodised aluminium (compliant with NORSOK M-121, structural aluminium)
- ✚ Electronic ballast with EOL protection, pre-heated start
- ✚ Pre-assembled long-life fluorescent lamps, colour 840
- ✚ Toughened glass lens
- ✚ Ambient temperature: -20°C to +55°C
Warranty: -20°C to +45°C (Standard); -20°C to +30°C (Emergency)
- ✚ Supply voltage: 220V-264Vac 50/60Hz
- ✚ Ingress protection: IP66/68 (J/B sealed with Terostat sealant)
- ✚ 90min battery backup time as standard.
- ✚ Self-testing: full function test at random every 100 days (RED error LED)
- ✚ Sliding mounting brackets for easy and quick installation
- ✚ Entries: 2xM25 clearance entries (M20 reducers optional)
- ✚ 0.5-6mm² spring terminals wired for single phase looping

Optional:

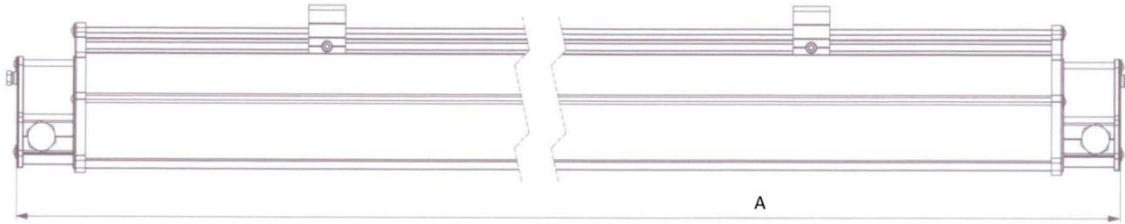
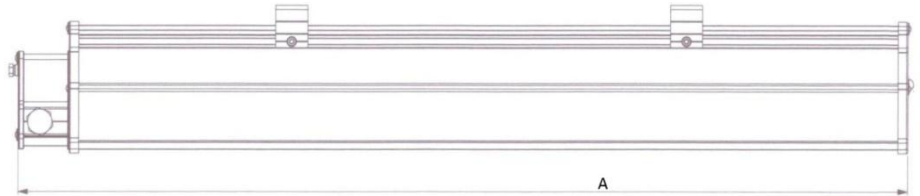
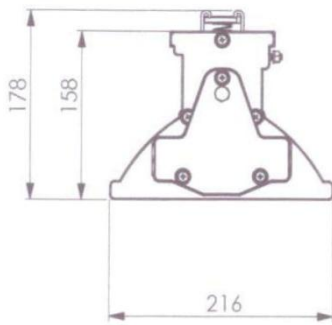
- ✚ Double junction box with 2.5mm² through wiring
- ✚ 110/120Vac, 50/60Hz
- ✚ Zone 1/Zone 2 versions
- ✚ Flying lead with sealed junction box, cable to customer specification
- ✚ 180min battery backup



* conditions apply

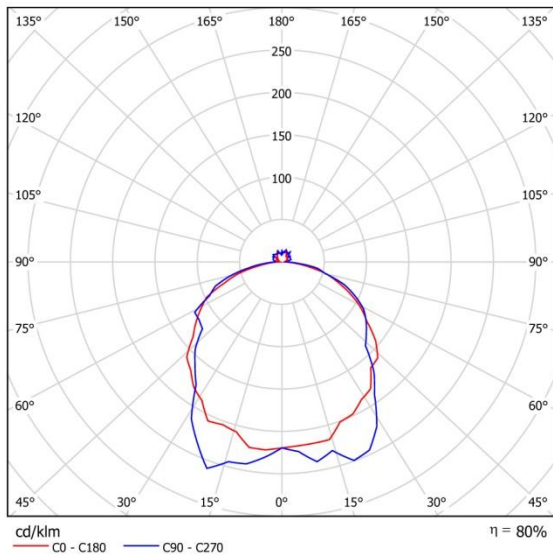
Dimensions:

| Type | Single JB (mm) | Double JB (mm) |
|--------------|----------------|----------------|
| 2x18W Std | 720 | 790 |
| 2x18W EM | 880 | 950 |
| 2x36W Std/EM | 1330 | 1400 |
| 2x58W Std/EM | 1630 | 1700 |

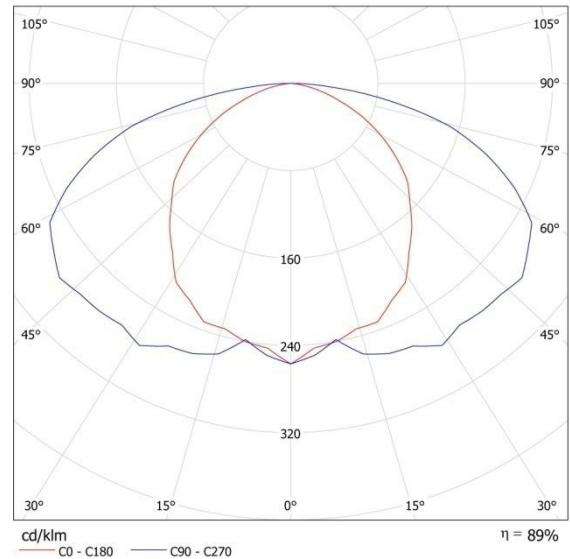


Light distribution curve:

2xT8



2xLED



Mounting options:



SAFE answers to HAZARDOUS questions