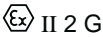


The TNCLS range of Ex em LED backlights are designed for use to illuminate level gauges in all kinds of industry where an explosive atmosphere may be present. TNCLS offers a long life, low maintenance LED solution to enable the operator to accurately read the level through the gauge glass.

### Specifications

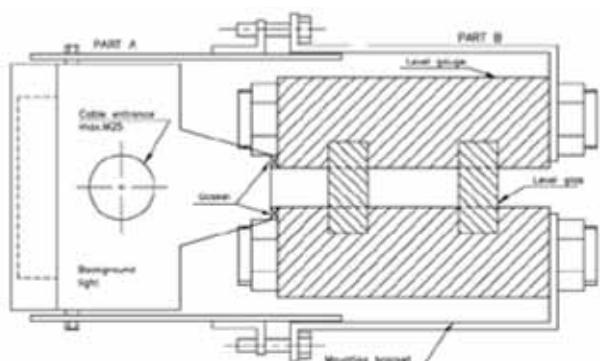
|                          |   |
|--------------------------|---|
| <b>Material</b>          | Acid resistant stainless steel AISI 316L  |
| <b>IP Rating</b>         | IP66  |
| <b>Temperature</b>       | -20°C to + 45°C (T4)  |
| <b>Approvals</b>         |   |
| - ATEX                   | DNV-2002-OSL-ATEX-0195  |
| <b>Standards</b>         | EN/IEC: 60079-0, 60079-7, 60079-18  |
| <b>Ex-Code</b>           | Ex em II T4<br> II 2 G |
| <b>Surface treatment</b> | Acidized  |
| <b>Earthing</b>          | M6 inside and outside   |
| <b>Cable entry</b>       | Max. 2xM25 in top and / or bottom, and/or sides   |
| <b>Power consumption</b> | Approx. 3VA per module  |
| <b>Voltage</b>           | 220-240VAC or 254VAC  |
| <b>Frequency</b>         | 50-60 Hz  |
| <b>Humidity</b>          | 100%  |
| <b>Terminals</b>         | Minimum 4x2.5 m <sup>2</sup>  |
| <b>Lumination colour</b> | Yellow  |



| Size-qty. modules | Total length (A) mm | Light exposure (B) mm | Weight kg |
|-------------------|---------------------|-----------------------|-----------|
| 27-1              | 270                 | 250                   | 2.3       |
| 30-1              | 300                 | 280                   | 2.5       |
| 34-1              | 340                 | 320                   | 2.7       |
| 36-1              | 360                 | 340                   | 2.8       |
| 27-2              | 540                 | 520                   | 4.3       |
| 30-2              | 600                 | 580                   | 4.6       |
| 34-2              | 680                 | 660                   | 5.1       |
| 36-2              | 720                 | 700                   | 5.3       |
| 27-3              | 810                 | 790                   | 6.2       |
| 30-3              | 900                 | 880                   | 6.7       |
| 34-3              | 1020                | 1000                  | 7.3       |
| 36-3              | 1080                | 1060                  | 7.5       |
| 30-4              | 1200                | 1180                  | 8.5       |

| Size-qty. modules | Total length (A) mm | Light exposure (B) mm | Weight kg |
|-------------------|---------------------|-----------------------|-----------|
| 27-1              | 270                 | 250                   | 2.3       |
| 30-1              | 300                 | 280                   | 2.5       |
| 34-1              | 340                 | 320                   | 2.7       |
| 36-1              | 360                 | 340                   | 2.8       |
| 27-2              | 540                 | 520                   | 4.3       |
| 30-2              | 600                 | 580                   | 4.6       |
| 34-2              | 680                 | 660                   | 5.1       |
| 36-2              | 720                 | 700                   | 5.3       |
| 27-3              | 810                 | 790                   | 6.2       |
| 30-3              | 900                 | 880                   | 6.7       |
| 34-3              | 1020                | 1000                  | 7.3       |
| 36-3              | 1080                | 1060                  | 7.5       |
| 30-4              | 1200                | 1180                  | 8.5       |

### Dimensions



Several units can be assembled to one column

Type key: TNCLS L-X

L = Module length

X = No. of modules

Total length: A = L\*X

Other sizes upon request



STL International Ltd  
 Hill Farm, Linton Hill  
 Linton, Maidstone  
 Kent. ME17 4AL  
 United Kingdom  
 tel. +44 (0)1622 749633  
 fax. +44 (0)1622 746800  
 email. solutions@stl-int.co.uk  
 web. www.stl-int.co.uk