

EV-MIOL-LED 90+90

The EV-MIOL-LED range of Medium Intensity Obstruction Lighting products utilizes LED technology to deliver low heat dissipation, low watt consumption and up to 100.000/hours maintenance free operation or up to 50.000/hours at constant light output.

The EV-MIOL-LED is designed to accommodate a double beam in a single housing luminaire. The typical twin light product is normally configured in two separate housings with the consequence of large overall dimension whereas the EV-MIOL-LED is condensed in a single housing, saving over 50% in weight.

The product is fully compliant with ICAO Annex 14, which requires that structures over 45m should incorporate medium intensity lighting fixtures (a lighting output of 1600 cd minimum) light colour red.

Specifications

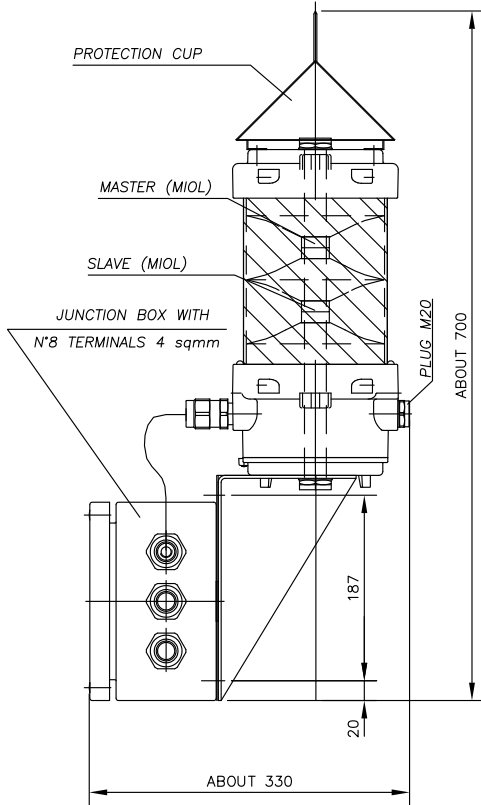
Material	Aluminium end-cups and cover painted by green colour polyurethane painting cycle (RAL 6003)
IP Rating	IP66
Temperature	-30°C to 50°C
Approvals	
- ATEX	02ATEXQ402
Standards	EN/IEC: 60079-0, 60079-15
Ex-code	⊕ II 3 GD Ex-nC IIC T6 Ex tD A22 IP66 T85°C
Gaskets	According to European Directive 94/9/EC (ATEX) For Zone 2 and Zone 22 O-ring made in Nitrile Rubber (NBR)
Surface treatment	External polyurethane painting (RAL 6003)
Entries	Nr. 2 M25 entries
Hardware and Screw	Stainless steel external hardware
Lamps	30 + 30 LED LUXEON 3
Lamps Wattage	90W + 90W
Rated operation voltage (UE)	220Vac / 240Vac
Frequency	50/60 Hz
Accessories	Customized colours

Require for data of separate central unit suitable to drive 3-4 EV-MIOL-LED-90+90



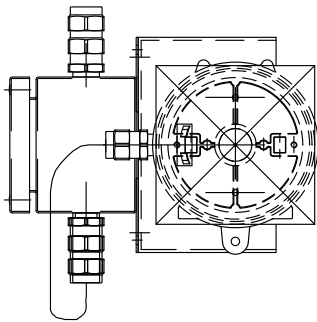
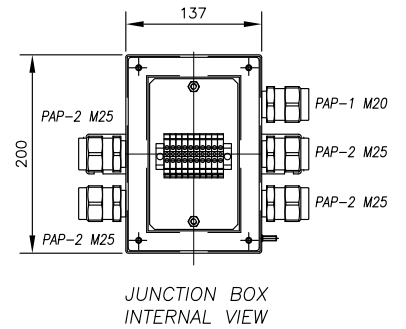
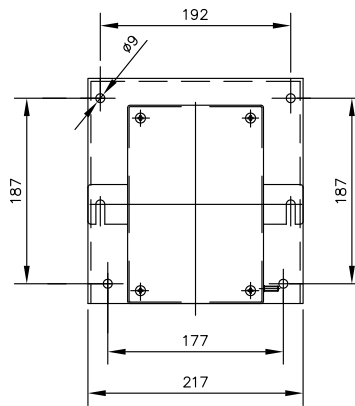


Dimensions



RED OBSTRUCTION LIGHTS (MIOL)
720x90x52 + 720x90x52

JUNCTION BOX
FIXING DETAILS



STL International Ltd
Hill Farm, Linton Hill
Linton, Maidstone
Kent, ME17 4AL
United Kingdom
tel. +44 (0)1622 749633
fax. +44 (0)1622 746800
email. solutions@stl-int.co.uk
web. www.stl-int.co.uk