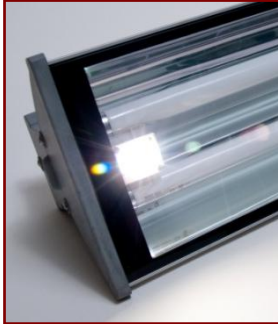


# Fluorescent Luminaire Zone 2

**MAINTENANCE FREE – SEALED FOR LIFE**  
**10 year warranty\***

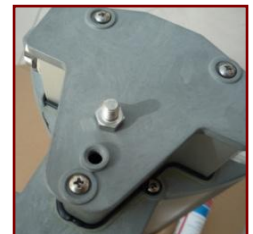
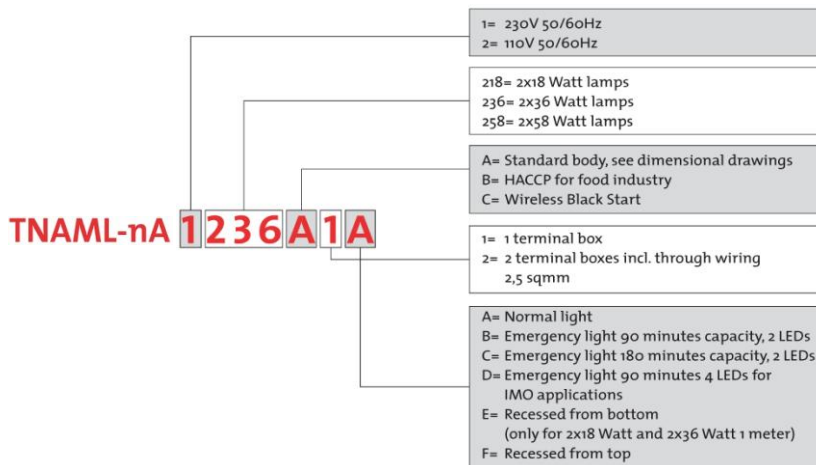


**ATEX Category 3**

Ex II 3 G Ex nA nC IIC T6 Gc

Ex II 3 D Ex tD A22 T80°C IP66/68

**Certified for use in zone 2 and 22**



## Features:

- ✚ Sealed for life construction – maintenance free design  
Requires only visual inspection to EN/IEC 60079-17
- ✚ Fully Recyclable
- ✚ Seawater resistant anodised aluminium  
(compliant with NORSOK M-121, structural aluminium)
- ✚ Electronic ballast with EOL protection, pre-heated start
- ✚ Pre-assembled long-life fluorescent lamps, colour 840
- ✚ Toughened glass lens
- ✚ Ambient temperature: -20°C to +55°C
- ✚ Warranty: -20°C to +45°C (Standard); -20°C to +30°C (Emergency)
- ✚ Supply voltage: 220V-264Vac 50/60Hz
- ✚ Ingress protection: IP66/68 (J/B sealed with Terostat sealant)
- ✚ 90min battery backup time as standard.
- ✚ Self-testing: full function test at random every 100 days  
(RED error LED)
- ✚ Sliding mounting brackets for easy and quick installation
- ✚ Entries: 2xM25 clearance entries
- ✚ 0.5-6mm<sup>2</sup> spring terminals wired for single phase looping

## Optional:

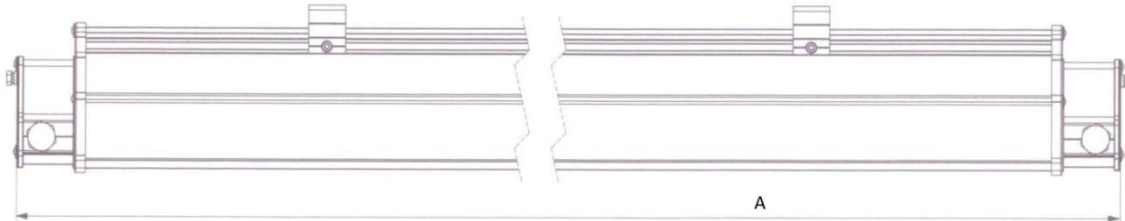
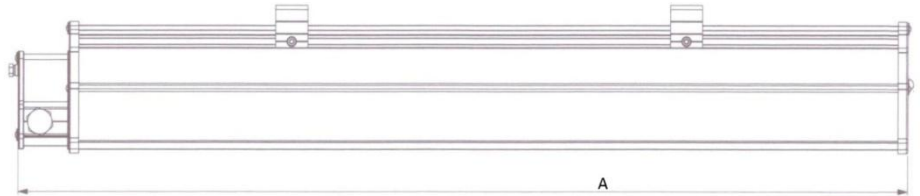
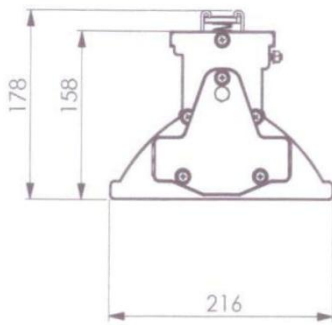
- ✚ Double junction box with 2.5mm<sup>2</sup> through wiring
- ✚ 110/120Vac, 50/60Hz
- ✚ Industrial/Zone 1 versions
- ✚ Flying lead with sealed junction box, cable to customer specification
- ✚ M25-M20 reducers
- ✚ 180min battery backup
- ✚ Wireless 'BLACK START' facility
- ✚ HACCP compliant (report DEKRA 06540)



\* conditions apply

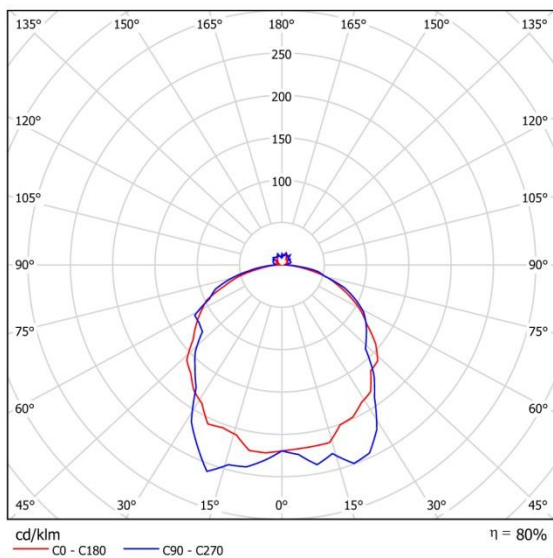
## Dimensions:

Type	Single JB (mm)	Double JB (mm)
2x18W Std	720	790
2x18W EM	880	950
2x36W Std/EM	1330	1400
2x58W Std/EM	1630	1700

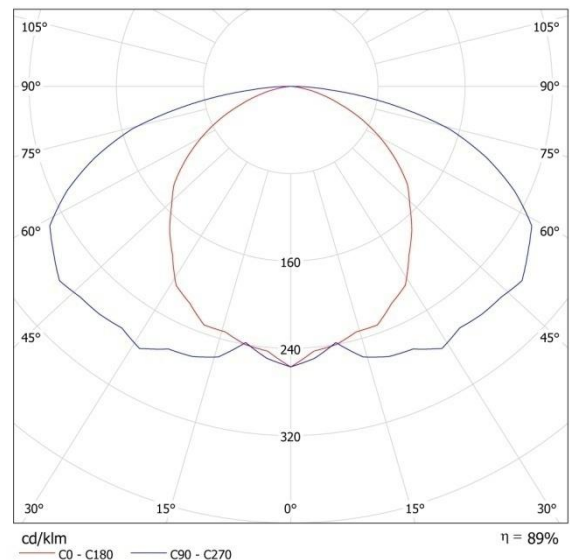


## Light distribution curve:

### 2xT8



### 2xLED



## Mounting options:



**SAFE answers to HAZARDOUS questions**